

Angel Fire Studio Tour

Saturday-September 28, 2024

9:00am-5:00pm

Sunday-September 29, 2024

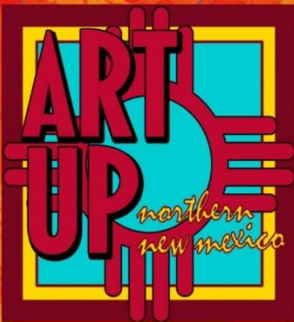
11:00am-4:00pm

Presented by

Art Up Northern New Mexico

27 Artists/15 locations

Self Guided Tour



www.angelfirestudiotour.org



This project is supported in part by Angel Fire Lodger's Tax funding



The Businesses of Centro Plaza
Welcome you to Angel Fire!
Public Restrooms
available in our foyer



RESORT PROPERTIES
— OF ANGEL FIRE, LLC —



COLDWELL BANKER
MOUNTAIN
PROPERTIES

John R. **Sutton**
General Building Contractors, Inc.



DAN'S

Flooring Window Coverings Fireplaces
Pitts & Spitts Grills Fire Pits Zwilling Knives



LINDSEY
CUSTOM BUILDERS LLC

Artist: Laurie Phelps

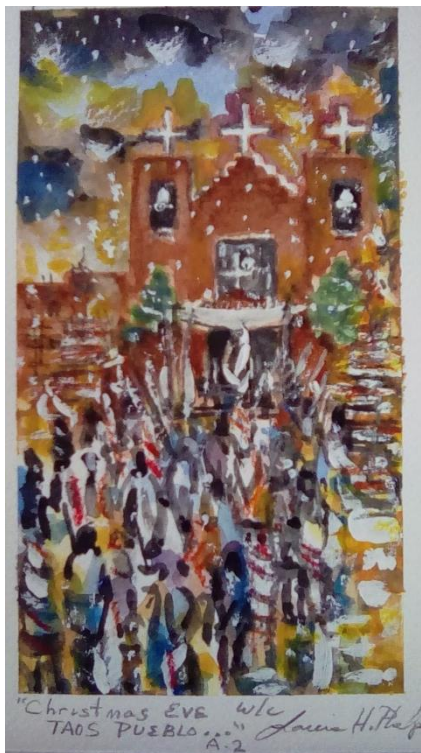
#1 on Tour Map, located 26047 E. Hwy 64 in the Taos Canyon

Directions: Located close to mile marker 261 in the Taos Canyon. Approximately 14 miles from the blinking light at Hwy 64/Hwy 434 in Angel Fire



Laurie Hill Phelps has been a producing artist in Taos canyon for 41 years. Her studio is easy to find on highway East US 64 and is open to the public. She is represented in Taos on Kit Carson road by The Ranch at Taos. A wonderful gallery of talented artists. Laurie's paintings are part of collections throughout the US and parts of the world. Laurie works in water color and oil. Her contemporary paintings of northern New Mexico are colorful and vibrant.

Laurie also teaches classes to all ages. Her experience can meet you at all levels. You can find her paintings online at artamerica.com and she can be reached at phelps.laurie@gmail.com.





Artist: Bob McIntyre

#2 on the Tour map, located at 26317 E. Hwy 64 in the Taos Canyon.

Directions: leaving #1, travel left onto Hwy 64 toward Angel Fire. The McIntyre Studio is 2.6 miles on the left hand side of the road.

Approximately 11 miles from Angel Fire



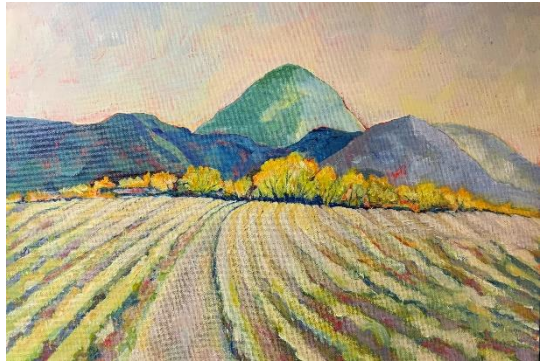
“ I Have been making custom fly rods for over twelve years. My fly rods are made from graphite, fiberglass or bamboo. I try to make them unique by utilizing different types of handles and various color combinations of threads. I look all over the country for quality blanks and frequently acquire them from Canada.” Bob McIntyre

Artist: Melissa McIntyre

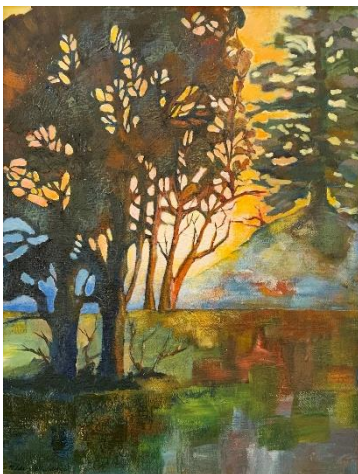
#2 on the Tour map, located at 26317 E. Hwy 64 in the Taos Canyon.

Directions: leaving #1, travel left onto Hwy 64 toward Angel Fire. The McIntyre Studio is 2.6 miles on the left hand side of the road.

Approximately 11 miles from Angel Fire. (on the right)



I am a block print artist, watercolorist and acrylic painter. Favorite subjects are old crumbling buildings, rusty farm implements, seascapes and of course beloved New Mexico landscapes.



Artist: Sarah McIntyre

#2 on the Tour map, located at 26317 E. Hwy 64 in the Taos Canyon.

Directions: leaving #1, travel left onto Hwy 64 toward Angel Fire. The McIntyre Studio is 2.6 miles on the left hand side of the road.

Approximately 11 miles from Angel Fire. (on the right)



Sarah is a fine art landscape and portrait photographer who also makes her own prints, and enjoys sharing the art of photography with others through teaching. She particularly loves photographing the unique beauty found in the landscape, architecture, and people of New Mexico and the great Southwest.





TATY AT THE BUMP

COFFEE | BOBA | MILKSHAKES | TEAS | BREAKFAST | LUNCH

3375 Mountain View Blvd Suite D
Angel Fire, NM

Dine in – Outdoor Seating – Curbside Pick-up



Phil and Hannah invite you to experience
Taty at the Bump!

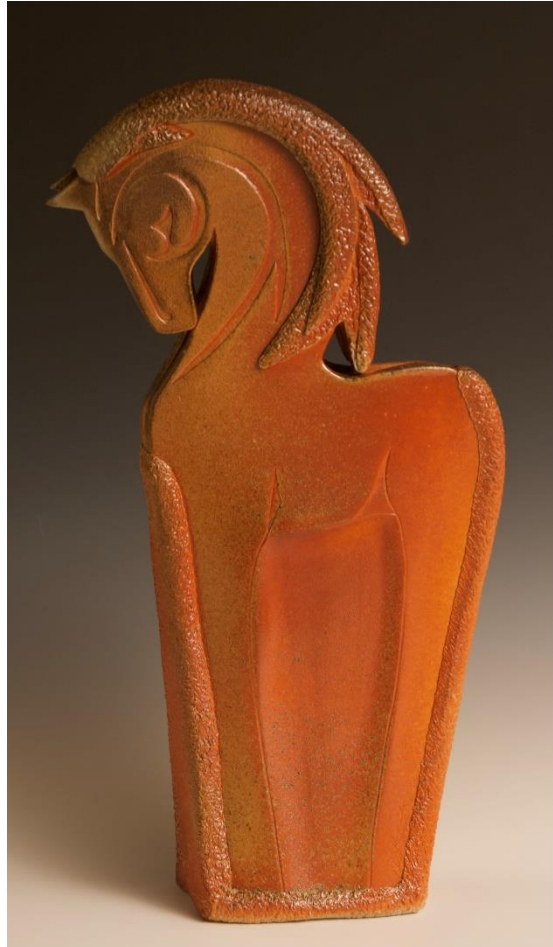
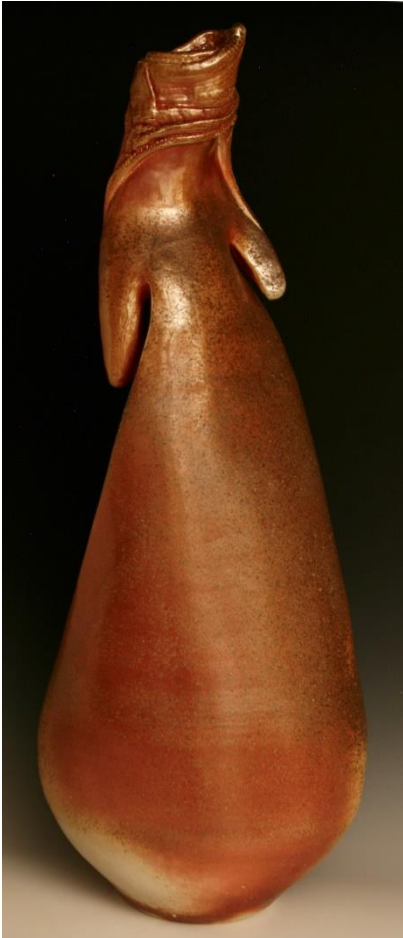
Delicious sandwiches * Best coffee * Yummy bagels
Tasty breakfast sandwiches * Boba, Chai, and
Thai Teas * Freshly baked bread * Pastries *
Comfy atmosphere
Popular place for the locals!



**Artists: Enchanted Circle
Pottery- Kevin &
JoAnne DeKeuster**

#3 on the Tour map, located at
26871 East US Hwy 64, in the Taos
Canyon

Directions: leaving #2 continue on
Hwy 64 toward Angel Fire. Drive
approx. 4.3 miles to **Enchanted Circle
Pottery**, turn left into their driveway
on the left side of the road.
Approximately 7 miles from Angel
Fire. (on the right)





ENCHANTED CIRCLE POTTERY is owned and operated by artists Kevin and JoAnne DeKeuster. The couple create a variety of functional and sculptural ceramic pieces. The functional ware is lead free, dishwasher and microwave safe. Their artwork is fired solely with wood, an ancient Japanese process, that produces one of a kind iridescent colors.



Artist:

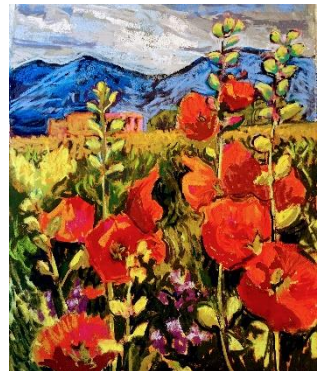
Ramona Bagley

#4 on the Tour map, located at 28 Fria Court in Angel Fire, NM

Directions: Leaving #3 turn left on Hwy 64 and travel toward Angel Fire. Drive 7 miles to the blinking light then turn right. Drive south 0.3 miles and turn right onto Fria Road, Take a right onto Fria Court. (which is unmarked. Look for the Studio Art Tour signs. This is the only road that runs along in front of a row of houses). On your right at the end of that road, drive through the gate labeled A- Fire Water LLC. & 'Water Works Gallery'. The Gallery entrance is to the right of the overhead door (located in the middle of the building)



Ramona is an award winning artist and has shown at fine art galleries in Taos, Angel Fire, Phoenix, Boston, and Arizona. She has recently begun teaching painting and composition online. Her work is colorful southwest landscapes, animals, people and still lifes in oils and pastels.





Artist: Ray Renfroe

#5 on the Tour map, located at **Whatville**, 30 Trujillo Lane in Angel Fire

Directions: leaving #4 drive back to Mountain View Blvd. (Hwy 434). Turn right. Drive 1.2 miles. Turn left on Camino Grande. Then turn left on the first dirt road. (Trujillo Lane). You are arriving at Whatville

Whatville, made up largely of colorful wooden structures, collected objects and art pieces made by Renfroe, is set in the imaginary “Shadow National Forest.” The work-in-progress doesn’t adhere to one artistic story line. Ray says, “I just want to see people have fun ... That’s my feeling. I want to see families. That’s what I want. That smile is worth more than a million bucks. It just is.”





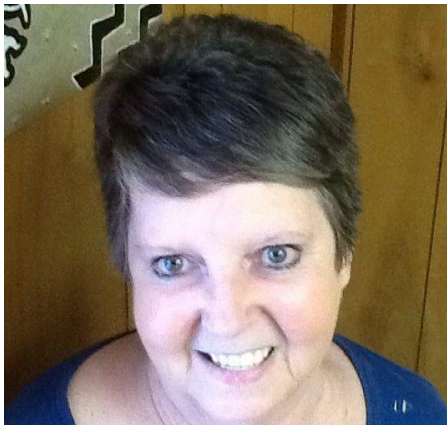
Artist Melissa Ponce de Leon

#6 on the Tour map, located in Ponce de Leon Creations, 3471 Mountain View Blvd. Unit 3

Directions: leaving #5, drive back to Hwy 434/Mountain View Blvd., turn left. Drive .2 miles to Angel Square. Turn right into the parking lot

As a family business, we infuse our creations with a personal touch, ensuring that each piece not only reflects our artistic vision but also carries the warmth and spirit of our heritage. Every creation from Ponce de Leon is a unique expression of beauty and craftsmanship, making it the perfect adornment for those seeking distinctive and meaningful jewelry.





Artist: Charmaine Romero

#7 on the Tour map, located in the Arthur Insurance Bldg. at 3417 Mountain View Blvd. inside the Seaton Bldg.

Directions: leaving #6, turn right onto Mountain View Blvd., drive .5 miles and it's on your right. Artist is showing inside the blue Seaton building.



Charmaine loves to bake and craft because she loves to see people smile! When you taste one of her homemade baked goods, it will make you happy! She also specializes in wreaths. Since she did not have any photos, you'll want to visit her location and see for yourself!

Artist: Taos Jewelry/Bob Eaton & Diane Eger

#8 on the Tour map, located at 3407 Mountain View Blvd in the foyer of Centro Plaza, Angel Fire, NM



Directions: Leaving #7, drive across the street to Centro Plaza. Park by the main front steps. The artists are located in the foyer of the Angel Fire Chamber of Commerce.

Handmade fine jewelry featuring unique and precious gemstones set in silver and gold.



ALSO AT #8 on the Tour map, located at 3407 Mountain View Blvd in Centro Plaza foyer in Angel Fire

Artist: Nick Ortega



Nick Ortega, Stained Glass Artisan, passed in 2023; however, his wife Martha is representing his work. His pieces include a variety of colors, designs and styles.

Artist: Larry Cisneros



Larry utilizes end-grain hard and soft wood in his cutting boards, crosses and boxes. He incorporates angles and different natural shades of color into his designs. And granite charcuterie and lazy susan's.

Artist: Susan Chavez



Susan creates modern and whimsical flour sack dish drying towels, cotton dish cloths, dish scrubbies, cast iron handle holders and more in a huge variety of colors and styles to fit every kitchen.



COLDWELL BANKER

MOUNTAIN PROPERTIES

Our brokers are experts in luxury resort real estate, with a proven track record of representing extraordinary properties in Coldwell Banker Mountain Properties | Angel Fire. With bespoke marketing strategies and one of real estate's most robust global networks, let our brokers help you find the perfect mountain home or help you get more when it's time to sell.

There are over 50 mountain communities in the Rocky Mountain West, and one company that connects you to all of them. Whether you are looking for homes in the Colorado communities of Vail, Breckenridge, Frisco, Winter Park, Vail, or Crested Butte; the mountains of New Mexico, Santa Fe, Taos, and Angel Fire; the Teton Valley in Idaho; or Jackson Hole in Wyoming; we can help. We have one of the largest presences in mountain resort markets, and over 200 brokers to help guide you on your real estate journey.

With the most experience and local market knowledge, no other real es-

3375 Mountain View Blvd. Suite E
Angel Fire, NM 87710

575-377-1192

204 Paseo Del Pueblo Norte
Taos, NM 87571

575-758-8673



COLDWELL BANKER

MOUNTAIN
PROPERTIES

Artist: Jo Mixon

#9 on the Tour map, located at 42 Sage Lane, Angel Fire, NM

Directions: Leaving #8 go to the south end of the parking lot and turn right onto Sage Lane. Drive up the dirt road .2 miles, just until it becomes paved. The artist's location is on the right.



“Making art makes me happy. I paint with acrylic and oils on a variety of surfaces; canvas, furniture, walls, yard art, horses, people... I see vivid colors in abstract ways.” Jo Mixon - Abstract Impressionist Artist



Artists: Michael & Johnese Turri

#9 on the Tour map, located at 42 Sage Lane in Angel Fire

Directions Leaving #8 go to the south end of the parking lot and turn right onto Sage Lane. Drive up the dirt road .2 miles, just until it becomes paved. The artist's location is on the right



Michael and Johnese Turri find a sense of art in a wide variety of recycled materials. Michael likes making frames from old wood for his digital art. "The more weather beaten the better," he says. Johnese calls her unique style of art "whimsical." Besides all the rustic/recycled stuff, her passion is needle felting of snow people, trees and small bowls



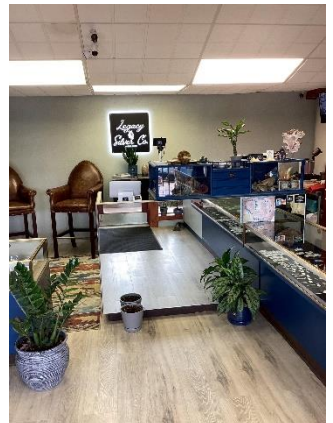




Artist: Landon Dooley, Larry Nixon, John James

#10 on the Tour Map, located at 3375 Mountain View Blvd., in Mountain View Mall , upstairs.

Directions: leaving #9 drive back to Mountain View Blvd., turn right. Drive .2 miles. Turn into the parking lot at Mountain Sports. It is located up the outside stairway



Artist: Christopher Sullivan

#11 on the Tour map, located at Coldwell Banker Mountain Properties, 3375 Mountain View Blvd. Suite E, Angel Fire, NM

Directions: leaving # 10, walk back down the stairs and into the corner offices of Coldwell Banker Mountain Properties.



Painting is the avenue to voice my story by reaching others, who, like me, may be searching for an unspoken feeling and beauty of their own. The human experience influences me to express the feelings, thoughts and images I wish to communicate ... -Chris Sullivan





Artist: Donovan Medina

#12 on the Tour map, located in the Community Room at New Mexico Bank & Trust, #1 First National Place

Directions: leaving #11, drive out of the parking lot to Mountain View Blvd., turn right. Quick turn right at the corner on Bill Burgess Blvd. Turn right Winter Park, then turn into the parking lot of New Mexico Bank & Trust.

"I am a painter and silversmith. I refer to my collection of art as donodina. I use Benjamin Moore paint on canvas for the vivid pigments. As a member of Zia Pueblo, I have shown and sold paintings at the Native American Art Gallery hosted by The State of New Mexico. I am also a silversmith and I work with turquoise and silver to make rings & pendants. I am excited to share my art with whomever it speaks to and inspires." Donovan Medina



Artist: Gail Tate

#12 on the Tour map, located in the Community Room of New Mexico Bank & Trust, #1 First National Place

Directions: leaving #11, turn right on Mountain View Blvd. then a quick left on Bill Burgess Blvd. Turn right at Winter Park, then left into bank parking lot



“ I design and create hand crafted wood items that are functional, as well as pieces of art, that are fun to look at and enjoy. Most of the items are created using a wood lathe. Other items are cut, laminated, sanded and finished to the desired specifications. It is a pleasure to be part of the Angel Fire Studio Tour again this year!”

Gail Tate





Artist: Cynthia Smith

#13 on the Tour map, located at 50 Santo Domingo Trail in Angel Fire, NM

Directions:: leaving #12 go back to Mountain View Blvd. Turn left, drive .8 miles, then turn right onto Country Club Blvd. Turn right again on San Mateo. Make the curve then continue straight another 1.3 miles, then turn left onto Santo Domingo Trail. Their studio is $\frac{1}{4}$ mile up on the right.

“Harmony is a term you do not hear often, yet balance in life brings a quiet peace that has a “hum”; a vibration that all is right with the world; *Harmony*. I create art to help me find my stillness. No formal training, just curiosity to break personal boundaries and a deep desire for a sense of freedom. May you find that “hum”, the balance, the joy and do everything you can to stay there. “
Cynthia Smith



Artist: Julia Robinson-Smith

#13 on the Tour map,
located at 50 Santo
Domingo Trail

Directions: leaving #12
go back to Mountain View
Blvd. Turn left, drive .8
miles, then turn right onto
Country Club Blvd. Turn right
again on San Mateo. Make
the curve then continue
straight another 1.3 miles,
then turn left onto Santo
Domingo Trail. Their studio
is ¼ of mile up on the right.



“In my present day, any type of creativity brings faith, inner joy, hope and child-like wonder and awe. The paint brush, the pencils or the sculpting hands allow me to settle into feelings of peace and possibilities. My drestivity comes from living, surviving and then thriving in this experience we are all having as human beings. I am so grateful!! “ Julia



Artist:

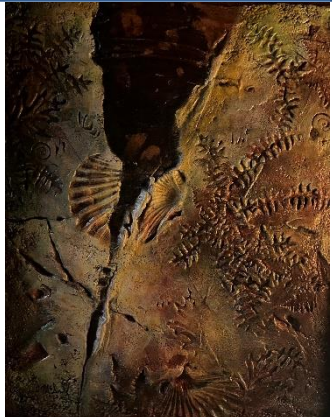
Tammie McDonald

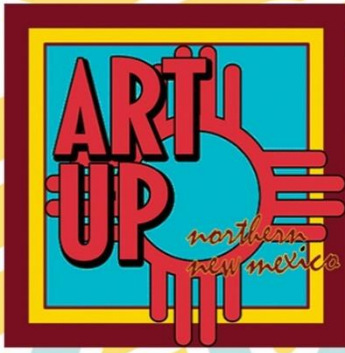
#14 on the Tour map, located at 49 Preston Trail in the Angel Fire.

Directions: leaving #13 turn right. Drive almost a mile to Agua Fria, turn right. Then ¼ mile turn left on Via Del Rey, quickly right onto Spyglass Hill. About 900 ft. turn right onto Preston Trail. The artist is the sage green house on the right.



Tammie enjoys exploring DIVERSE styles & mediums with her paintings, and has loved art since her first box of 64 Crayolas (with the built in sharpener!) She works in acrylics, watercolor and collage art, and included the incorporation of textural painting with joint compound. She has done many art and juried shows over her years of living in Jakarta, Indonesia, and in Texas. Her motto is: "May the works of my hands praise Him in the gates"





*I support the Arts in
Northern
New Mexico*

○Lifetime ○Business ○Gallery ○Patron ○Artist



**All Studios, Galleries,
Host Businesses, and
Artist's Homes
are open
9:00am to 5:00 pm Saturday
September 28, 2024
and
11:00am-4:00pm Sunday
September 29, 2024**

Special thanks and gratitude go to all who help make this tour a success. To our sponsors, our artists, and the grants we receive. And to all those who participate and attend the tour to support our local artists!

Sincerely, Angel Fire Studio Art Tour Chair, Jo Mixon



Artist: Jacqui Binford-Bell

#15 on the Tour map, located in the Jacqui Binford-Bell Studio at 11 Llano Vista Rd, Black Lake, NM

Directions: leaving #14, go right or left & follow Preston Trail to Spyglass Hill. Turn right. Drive ½ mile to San Mateo, turn right, drive to Country Club, turn left back to Mountain View Blvd. Turn right, drive 3.7 miles, then turn right on Osha. At the fork in the road, stay left and continue to the 3rd house on the left. Jacqui's Studio is on the right side of the building thru the gate.



Jacqui's work consists of Illusionary watercolor and mixed paintings, fine art photography, and flights of fantasy in fabric.

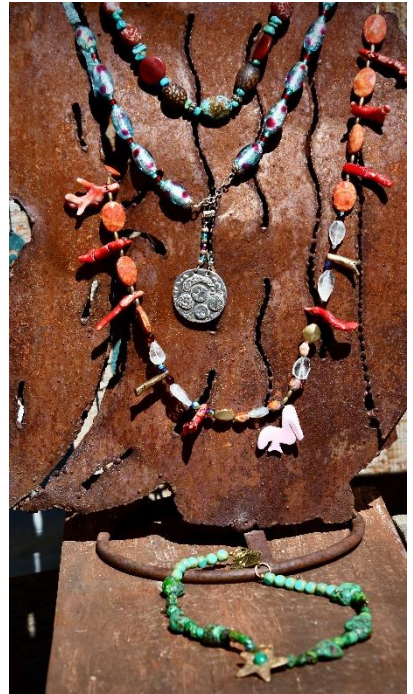
Artist: Judy Kosanovich

#15 on the Tour map, located in the Jacqui Binford-Bell Studio at 11 Llano Vista Rd, Black Lake, NM

Directions: leaving #14, go right or left & follow Preston Trail to Spyglass Hill. Turn right. Drive ½ mile to San Mateo, turn right, drive to Country Club, turn left back to Mountain View Blvd. Turn right, drive 3.7 miles, then turn left on Osha. At the fork in the road, stay left and continue to the 3rd house on the left.

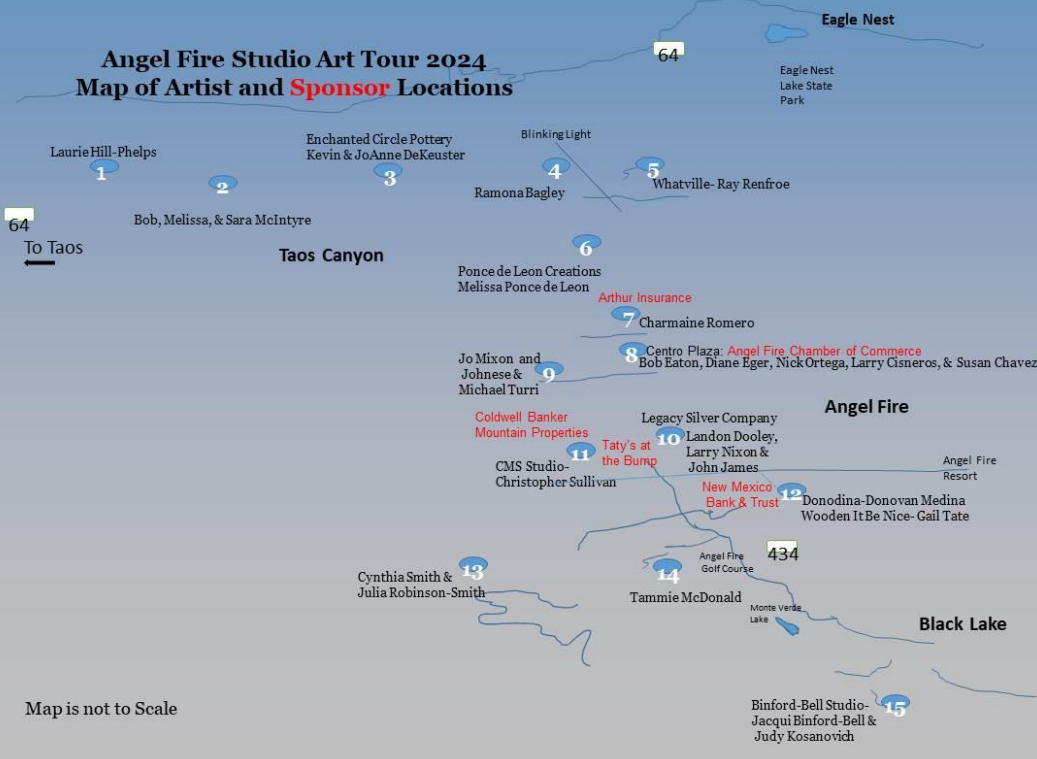


I started Black Dog Jewelry in 2009 after taking a workshop in making jewelry incorporating Silver Clay adornments. As a potter, I loved the medium and took a certification course in both Silver and Bronze/Copper clay at the Gem and Mineral Show in Tucson the following year. I love incorporating my pieces with the beads that I have gathered over the years and around the world.



Angel Fire Studio Art Tour 2024

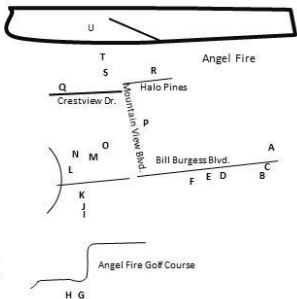
Map of Artist and Sponsor Locations



Map is not to Scale

- A. El Jefe : 10 Springs Rd-
- B. The Lodge at Angel Fire Resort: 10 Miller Lane- Lodging, Bike Park, Zipline, Disc Golf, Golf Course, Monte Verde Lake activities, Ski & Snowboard Resort. www.angelfireresort.com
- C. The Lift Coffee Shop: Inside the Lodge at Angel Fire Resort (Lobby). 10 Miller Lane.
- D. Pizza Stop: 52 Bill Burgess Blvd
- E. Pub n' grub 52 Bill Burgess Blvd, upstairs
- F. MiKuna Grill: 48 Bill Burgess Blvd. on the lower floor in the back.
- G. Elements Fine Dining and Lounge: Upstairs at the Angel Fire Country club
- H. Par & Grill: Lower level at the Angel Fire Country Club Golf Course
- I. Jeanette's Food Cart: 3365 Mountain View Blvd. in Frontier Park
- J. Thai Angel Food Cart: 3365 Mountain View Blvd in Frontier Park.
- K. Smoke Rings BBQ: Food Cart 3365 Mountain View Blvd in Frontier Park
- L. Lowe's Valley Market: 3373 Mountain View Blvd Subway Sandwich: Located inside of Lowe's Valley Market.
- M. Taty at the Bump: 3375 Mountain View Blvd. Featured sponsor of Art Tour
- N. Angel Fired Pizza: (upstairs) 3375 Mountain View Blvd.

- O. Morning Star Restaurant: 3377 Mountain View Blvd, inside of the Elk Horn Lodge.
- P. Angel Fire Mini Mart: 3394 Mountain View Blvd.
- Q. Mi Cocina Mexicana: 12 Crestview Dr. in the Yellow Cove Arts Building.
- R. The Bakery & Café @ Angel Fire: 3420 Mountain View Blvd.
- S. Arias Taqueria Food Cart: 3429 Mountain View Blvd. (In Mountain Supply True Value's parking lot.)
- T. Zebs Restaurant & Bar: 3431 Mountain View Blvd.
- U. J & A Fun Bakery & Café : 3453 Mountain View Blvd.



Angel Fire Studio Tour

Saturday-September 28, 2024
9:00am-5:00pm

Sunday-September 29, 2024
11:00am-4:00pm

Presented by
Art Up Northern New Mexico

27 Artists/15 locations
Self Guided Tour

www.angelfirestudiotour.org

ANGEL FIRE
CITY OF ANGEL FIRE

COLDWELL BANKER
MOUNTAIN PROPERTIES

TATY AT THE BUMP
ARTS & CRAFTS

NEW MEXICO
BANK & TRUST

This project is supported in part by Angel Fire Lodge's Tax funding