

Angel Fire Studio Tour

September 30 & October 1, 2023

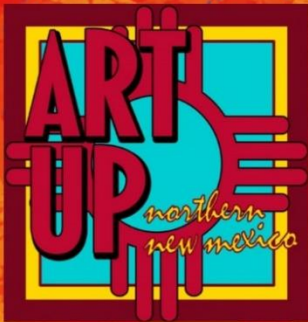
9:00am - 5:00pm

Presented by

Art Up Northern New Mexico

24 Artists/15 locations

Self Guided Tour



www.angelfirestudiotour.org



This project is supported in part by the Taos Community Foundation

This project is supported in part by Angel Fire Lodger's Tax funding



*Need a new house
to showcase that new art?*



CHISUM
REALTY GROUP

Boutique service. Global reach.

575.613.1810 | chisumgroup.com

*Come view our resident
artist Tracy Bell at...*

3407 Mountain View Blvd
Suite 1
Angel Fire, NM



Artist: Laurie Phelps

#1 on Tour Map, located 26047 E.
Hwy 64 in the Taos Canyon

Directions: Located close to mile
marker 261 in the Taos Canyon.
Approximately 19 miles from the
blinking light at Hwy 64/Hwy 434
in Angel Fire



Laurie Hill Phelps is celebrating 40 years as an artist in Taos New Mexico this year. Laurie paints with watercolor and oil, using lots of color and texture to depict the images of Northern New Mexico.. The studio is open to the public and she takes all ages for classes. Visitors are welcome!
phelps.laurie@gmail.com 575-758-1813.





Artist: Bob McIntyre

#2 on the Tour map, located at 26317 E. Hwy 64 in the Taos Canyon.

Directions: leaving #1, travel left onto Hwy 64 toward Angel Fire. The McIntyre Studio is 2.6 miles on the left hand side of the road.



"I Have been making custom fly rods for over eleven years. My fly rods are made from graphite, fiberglass or bamboo. I try to make them unique by utilizing different types of handles and various color combinations of threads. I look all over the country for quality blanks and frequently acquire them from Canada." Bob McIntyre



Artist: Melissa McIntyre

#2 on the Tour map, located at 26317 E. Hwy 64 in the Taos Canyon.

Directions: leaving #1, travel left onto Hwy 64 toward Angel Fire. The McIntyre Studio is 2.6 miles on the left hand side of the road.

I am a block print artist, watercolorist and acrylic painter. Favorite subjects are old crumbling buildings, rusty farm implements, seascapes and of course beloved New Mexico landscapes.



Artist: Sarah McIntyre

#2 on the Tour map, located at 26317 E. Hwy 64 in the Taos Canyon.

Directions: leaving #1, travel left onto Hwy 64 toward Angel Fire. The McIntyre Studio is 2.6 miles on the left hand side of the road.



Sarah is a fine art landscape and portrait photographer who also makes her own prints, and enjoys sharing the art of photography with others through teaching. She particularly loves photographing the unique beauty found in the landscape, architecture, and people of New Mexico and the great Southwest.



Artist: Amy Bobrick

#3 on the Tour map, located at
26439 E. Hwy 64 in the Taos
Canyon

Directions: leaving #2, travel
left onto Hwy 64 toward Angel
Fire. Drive 1.3 miles. Amy's
studio is on the left hand side of
the road.



"I do encaustic paintings, cold wax abstracts and florals, ceramic garden totems and animals with a flair of whimsy" Amy Bobrick

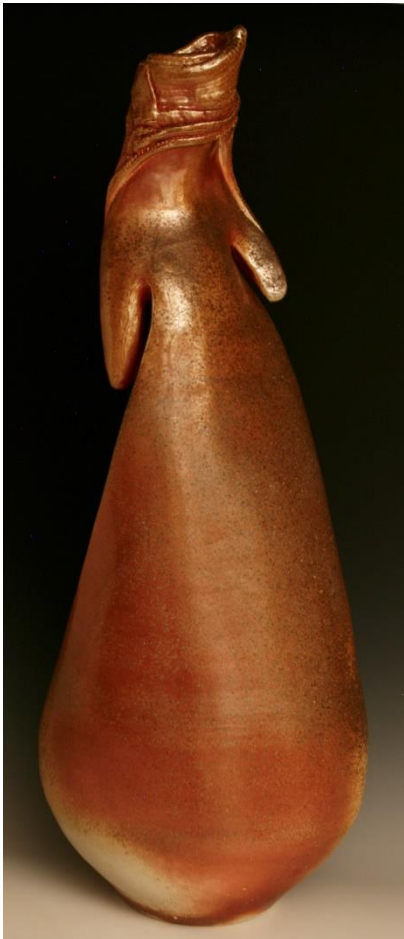




Artists: Enchanted Circle Pottery- Kevin & JoAnne DeKeuster

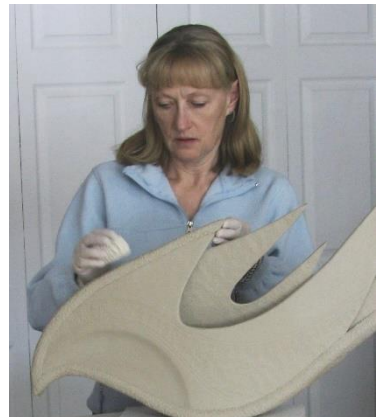
#4 on the Tour map, located at 26871 East US Hwy 64, in the Taos Canyon

Directions: leaving #3 continue on Hwy 64 toward Angel Fire. Drive approx. 4.3 miles to **Enchanted Circle Pottery**, turn left into their driveway on the left side of the road.





ENCHANTED CIRCLE POTTERY is owned and operated by artists Kevin and JoAnne DeKeuster. The couple create a variety of functional and sculptural ceramic pieces. The functional ware is lead free, dishwasher and microwave safe. Their artwork is fired solely with wood, an ancient Japanese process, that produces one of a kind iridescent colors.



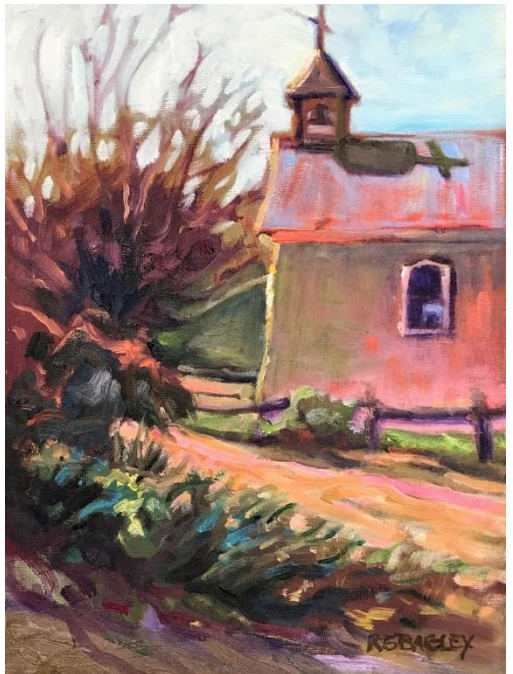
Artist: Ramona Bagley

#5 on the Tour map, located at 28 Fria Court in Angel Fire, NM

Directions: Leaving #4 turn left on Hwy 64 and travel toward Angel Fire. Drive 7 miles to the blinking light then turn right. Drive south 0.3 miles and turn right onto Fria Road, Take a right onto Fria Court. (which may be unmarked. This is the only road that runs along in front of a row of houses). On your right at the end of the road, drive through the gate labeled Angel Fire Water & 'Water Works Gallery'. The Gallery entrance is to the right of the overhead door (located in the middle of the building)



Ramona is an award winning artist and has shown at fine art galleries in Taos, Angel Fire, Phoenix, Boston, and Arizona. She has recently begun teaching painting and composition online. Her work is colorful southwest landscapes, animals, people and still lifes in oils and pastels.



Artist: Tracy Bell

#6 on the Tour map, located in Centro Plaza, 3407 Mountain View Blvd., Angel Fire, NM

Directions: leaving #5 go left back to Hwy 434, which turns into Mountain View Blvd. Go straight for 2 miles. Centro Plaza is on the right side of the road. Tracy is showing her art in Chisum Realty Group at the north end of the building.



Tracy enjoys working in many different mediums. The exploration of diversity serves as a reflection of the innocence of an untouched canvas, and its transformation into a finished detailed work of art.





Artist: Gail Tate

#7 on the Tour map, located in the Foyer of Centro Plaza, 3407 Mountain View Blvd. Angel Fire, NM

Directions: leaving #6, walk down to the middle foyer, by the main front steps, of Centro Plaza

"I design and create hand crafted wood items that are functional, as well as pieces of art, that are fun to look at and enjoy. Most of the items are created using a wood lathe. Other items are cut, laminated, sanded and finished to the desired specifications. It is a pleasure to be part of the Angel Fire Studio Tour again this year!"

Gail Tate



Artist: Taos Jewelry/Bob Eaton & Diane Eger

#7 on the Tour map, located
at 3407 Mountain View
Blvd/Hwy 434 in Centro Plaza,
Angel Fire, NM



Directions: Leaving #6, walk down to the middle door, by the main front steps, of Centro Plaza. The artists are located in the foyer of the Angel Fire Chamber of Commerce/Village Visitor Center

Handmade fine jewelry featuring unique and precious gemstones set in silver and gold.



Artist: Johnese Turri

#8 on the Tour map, located at 32 Sage Lane, Angel Fire, NM

Directions: Leaving #7 drive to the south end of the parking lot and turn right onto Sage Lane. Drive up the dirt road just until it becomes paved. The artist's location is on the right.



Johnese Turri has an unbridled passion for whimsical art created from a wide variety of materials. Her needle felting of snow people and small bowls has been her new focus along with feather art.

"I just love to see my ideas come to life and to be able to share my creations with others."



Artist: Jo Mixon

#8 on the Tour map, located at
32 Sage Lane, Angel Fire, NM

Directions: Leaving #7 go to the south end of the parking lot and turn right onto Sage Lane. Drive up the dirt road just until it becomes paved. The artist's location is on the right.



"Making art makes me happy. I paint with acrylic and oils on a variety of surfaces; canvas, furniture, walls, yard art..." Jo Mixon



Angel Fire Studio Art Tour 2023

Map of Artist and Sponsor Locations



Map is not to Scale



PUB N' GRUB



52 N. Angel Fire Rd/Bill Burgess Blvd.

Upstairs

Angel Fire, NM

Full Menu: Lunch & Dinner

Beer on tap

We SUPPORT THE ARTS

Proudly Sponsoring

Angel Fire Studio Art Tour

Mikuna Grill

PERUVIAN AND SOUTH-WESTERN CUISINE

48 N. Angel Fire Rd a.k.a Bill Burgess Blvd

We are serving the Angel Fire Community
Peruvian- Southwestern Cuisine!

Our items are Very unique



Let me personally welcome you to the experience of MiKuna Grill! The tastes and smells of Peru with the atmosphere and traditional dishes of New Mexico. Enjoy a cocktail or a glass of wine with appetizers, entrees and deserts. I invite you to come feel like family!

Owner Operator- *Gazmin McKee*



Our Specialties

Every plate offers something Special. But we think you'll really enjoy the Ceviche, Arroz con Mariscos, and the Aji de Gallina (just to name a few!)



Our History

Our food experiences lead us to dinner tables in Lima, and family gatherings right here in New Mexico. Our recipes are generational and our passion for food spans decades.

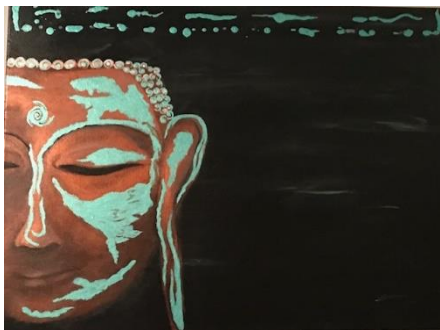


Artist: Cynthia Smith

#9 on the Tour map, located at 50 Santo Domingo Trail in Angel Fire, NM

Directions:: leaving #10 turn left on Sage and go back to Mountain View Blvd driving 1.2 miles. Turn right onto Country Club Blvd. then right again on San Mateo. Continue straight another 1.3 miles, then turn left onto Santo Domingo Trail. Their studio is $\frac{1}{4}$ of mile up on the right.

“Harmony is a term you do not hear often, yet balance in life brings a quiet peace that has a “hum”; a vibration that all is right with the world; *Harmony*. I create art to help me find my stillness. No formal training, just curiosity to break personal boundaries and a deep desire for a sense of freedom. May you find that “hum”, the balance, the joy and do everything you can to stay there.”
Cynthia Smith





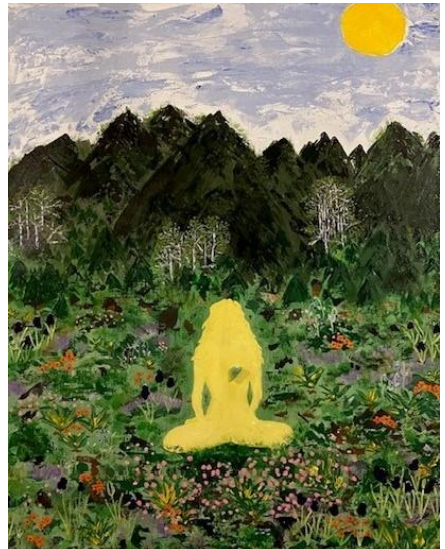
Artist: Julia Robinson-Smith

#9 on the Tour map, located at 50 Santo Domingo Trail in Angel Fire, NM

Directions: leaving #8 turn left on Sage and go back to Mountain View Blvd driving 1.2 miles. Turn right onto Country Club Blvd. then right again on San Mateo. Continue straight another 1.3 miles, then turn left onto Santo Domingo Trail. Their studio is $\frac{1}{4}$ of mile up on the right.



In my present day, any type of creativity brings faith, inner joy, hope and child-like wonder and awe. The paint brush, the pencils or the sculpting hands allow me to settle into feelings of peace and possibilities. My drestivity comes from living, surviving and then thriving in this experience we are all having as human beings. I am so grateful!! Julia





Artist: Christopher Sullivan

#10 on the Tour map, located at 33 Pine Valley, Angel Fire, NM

Directions: leaving #9 follow Pine Valley to Agua Fria then turn left. At the stop sign turn right on Via Del Rey at the AF Cabin Shares. Approx. .9 miles turn left onto Wheeler Dr. At the next stop sign turn right on Pine Valley and Christopher's home studio is on the right side about 3 houses down.



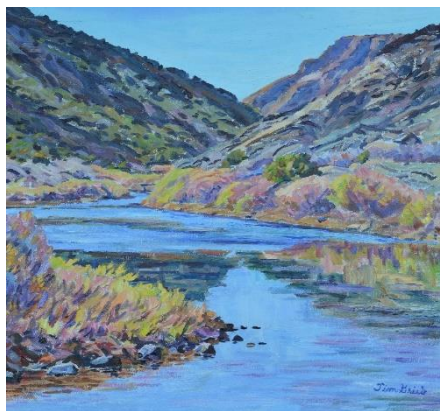
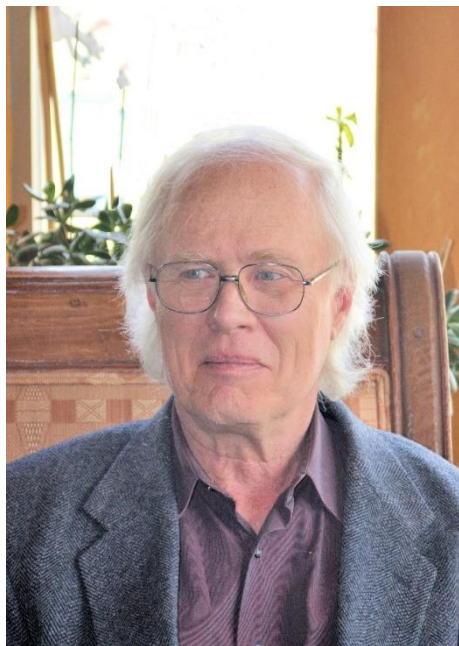
Painting is the avenue to voice my story by reaching others, who, like me, may be searching for an unspoken feeling and beauty of their own. The human experience influences me to express the feelings, thoughts and images I wish to communicate ... -Chris Sullivan



Artist: Timothy Grieb

#11 on the Tour map, located at 31 Osha Road in Black Lake, NM

Directions: leaving #10, Continue on Pine Valley turn left on Golfview Terrace. Drive .3 miles and turn right then a quick left on Sarazon Terrace. Another .4 miles take a left on Moraine Way. Then turn right onto Mountain View Blvd. toward Black Lake. Travel 2.8 miles, turn right onto Osha Rd. Stay to the right at the fork of the road. Tim's home is then on the left in a triplex.



Timothy's dyslexic learning disability has not kept him from becoming an amazing skilled artist. His work is ruggedly impressionistic plein-air landscapes in oil, pastel and watercolor



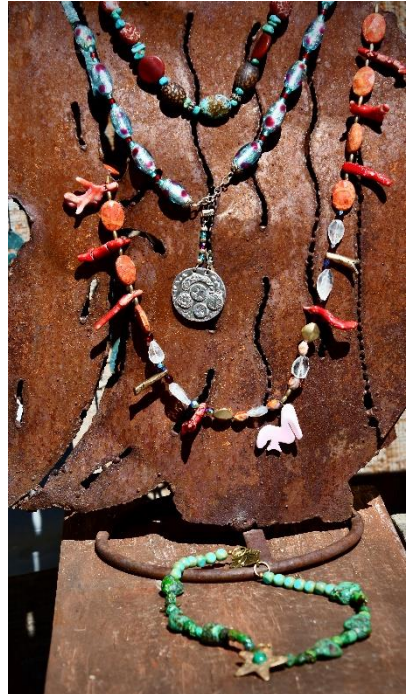


Artist: Judy Kosanovich

#12 on the Tour map, located in the Jacqui Binford-Bell Studio at 11 Llano Vista Rd, Black Lake, NM

Directions: leaving #11, travel right to the fork in the road, turn right and continue to the 3rd house on the left. Jacqui's Studio is on the right side of the building thru the gate.

I started Black Dog Jewelry in 2009 after taking a workshop in making jewelry incorporating Silver Clay adornments. As a potter, I loved the medium and took a certification course in both Silver and Bronze/Copper clay at the Gem and Mineral Show in Tucson the following year. I love incorporating my pieces with the beads that I have gathered over the years and around the world.



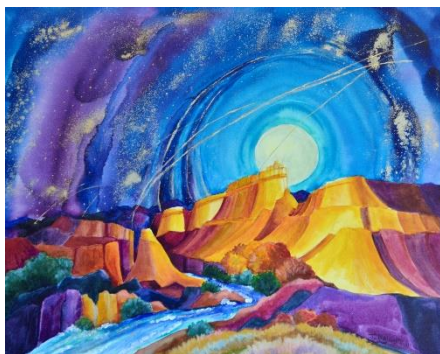
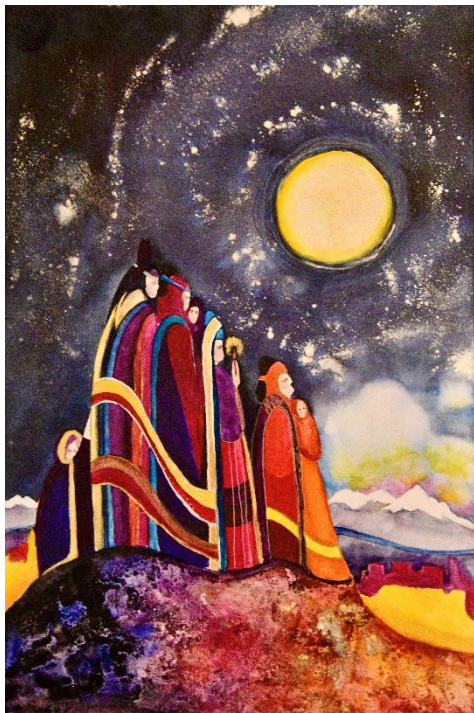
Artist: Jacqui Binford-Bell

#12 on the Tour map, located in the Jacqui Binford-Bell Studio at 11 Llano Vista Rd, Black Lake, NM

Directions: leaving #11, travel right on Osha to the fork in the road, turn slightly right and continue to the 3rd house on the left. Jacqui's Studio is on the right side of the building thru the gate.



Jacqui's work consists of Illusionary watercolor and mixed paintings, fine art photography, and flights of fantasy in fabric.





TATY^{AT THE} BUMP

COFFEE | BOBA | MILKSHAKES | TEAS | BREAKFAST | LUNCH

3375 Mountain View Blvd Suite D

Angel Fire, NM

Dine in – Outdoor Seating – Curbside Pick-up



Phil and Hannah invite you to experience
Taty at the Bump!

Delicious sandwiches * Best coffee * Yummy bagels
Tasty breakfast sandwiches * Boba, Chai, and Thai Teas
* Freshly baked bread * Pastries * Comfy atmosphere
Popular place for the locals!



The businesses of Centro Plaza

WELCOME you to Angel Fire!

Public Restrooms
available in our foyer.



RESORT PROPERTIES
— OF ANGEL FIRE, LLC —



MOUNTAIN PROPERTIES





Artist: Ray Renfroe

#13 on the Tour map, located at **Whatville**, 30 Trujillo Lane in Angel Fire

Directions: leaving #12 drive back to Hwy 434. Turn left back towards Angel Fire. Drive through Angel Fire turning right in about ____ miles at Camino Grande. Then turn left onto Trujillo Lane. You are arriving at Whatville



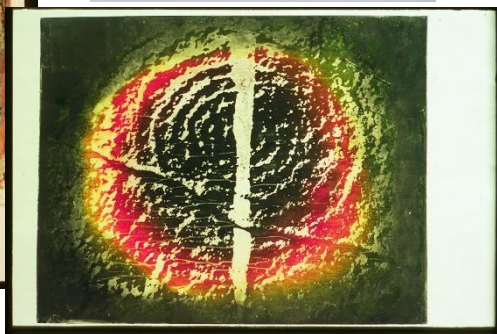
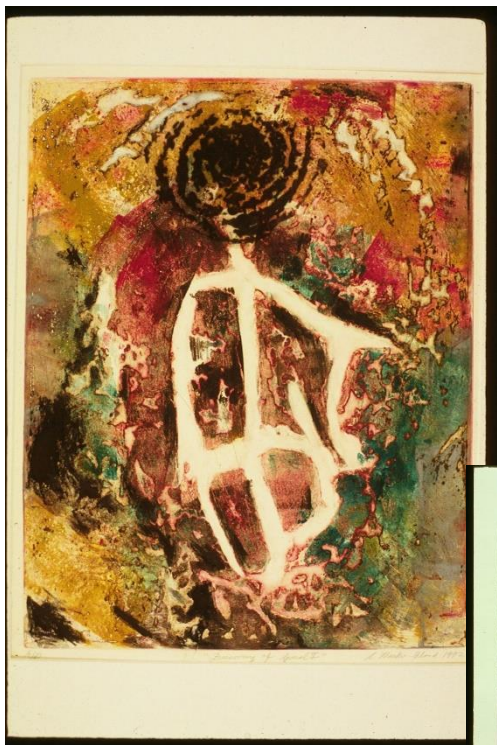
Whatville, made up largely of colorful wooden structures, collected objects and art pieces made by Renfroe, is set in the imaginary "Shadow National Forest." The work-in-progress doesn't adhere to one artistic story line. Ray says, "I just want to see people have fun ... That's my feeling. I want to see families. That's what I want. That smile is worth more than a million bucks. It just is."



Artist: Sandra Wasko-Flood

#14 on the Tour Map, located at 26 Bonita Lane

Directions: Leaving #13 go back to Mountain View Blvd. and turn right on Hwy 64. Turn left at the road to the Vietnam Veterans Memorial. Continue past the Memorial. (paved road turns into a dirt road) Continue on dirt road, Laguna St. Do not take the Laguna which goes off to the right but continue around as it turns past the garbage dump. Turn left on Pino Street at the dead end, then right onto Bonita Lane. Sandra's house is the octagon glass house on the left side.





All Studios
and
Artist's Homes
are open
9:00am to 5:00 pm Saturday
September 30
and Sunday October 1, 2023

Special thanks and gratitude go to all who help make this tour a success. To our sponsors, our artists, and the grants we receive. And to all those who participate and attend the tour to support our local artists!

Sincerely, Angel Fire Studio Art Tour Chair, Jo Mixon



Paid in part by the Village of Angel Fire Lodgers tax



LOVE IT HERE?

WE DO TOO.

Everyone comes to Angel Fire for different reasons — friendly ski hills, magnificent mountains, cool summers. Whatever you're searching for, we'll help you find the perfect home so you can be here more often.



RE/MAX
MOUNTAIN REALTY

575.216.5834 | afmountainrealty.com
3655 Mountain View Blvd., Angel Fire, New Mexico 87710

- A. El Jefe :** 10 Springs Rd-
- B. The Lodge at Angel Fire Resort:** 10 Miller Lane- Lodging, Bike Park, Zipline, Disc Golf, Golf Course, Monte Verde Lake activities, Ski & Snowboard Resort.
www.angelfireresort.com
- C. The Lift Coffee Shop:** Inside the Lodge at Angel Fire Resort(Lobby). 10 Miller Lane.
- D. Pizza Stop:** 52 Bill Burgess Blvd
- E. Pub n' grub** 52 Bill Burgess Blvd, upstairs. Featured sponsor of the Art Tour
- F. MiKuna Grill:** 48 Bill Burgess Blvd. on the lower floor in the back. Featured sponsor of the Art Tour
- G. Elements Fine Dining and Lounge:** Upstairs at the Angel Fire Country club
- H. Par & Grill:** Lower level at the Angel Fire Country Club Golf Course
- I. Jeanette's Food Cart:** 3365 Mountain View Blvd. in Frontier Park
- J. Thai Angel Food Cart:** 3365 Mountain View Blvd in Frontier Park.
- K. Lowe's Valley Market:** 3373 Mountain View Blvd **Subway Sandwich:** Located inside of Lowe's Valley Market.
- L. Taty at the Bump:** 3375 Mountain View Blvd. Featured sponsor of Art Tour
- M. Angel Fired Pizza:** (upstairs) 3375 Mountain View Blvd.
- N. Morning Star Restaurant:** 3377 Mountain View Blvd, inside of the Elk Horn Lodge.

O Angel Fire Mini Mart: 3394 Mountain View Blvd.

P. Mi Cocina Mexicana: 12 Crestview Dr. in the Yellow Cove Arts Building.

Q. The Bakery & Café @ Angel Fire: 3420 Mountain View Blvd.

R. Arias Taqueria Food Cart: 3429 Mountain View Blvd. (In Mountain Supply True Value's parking lot.)

S. Zebs Restaurant & Bar: 3431 Mountain View Blvd.

T. 1810 Grill Food Truck: 3433 Mountain View Blvd. (in Alpine Lumber's parking lot

U. J & A Bakery: 3453 Mountain View Blvd.

